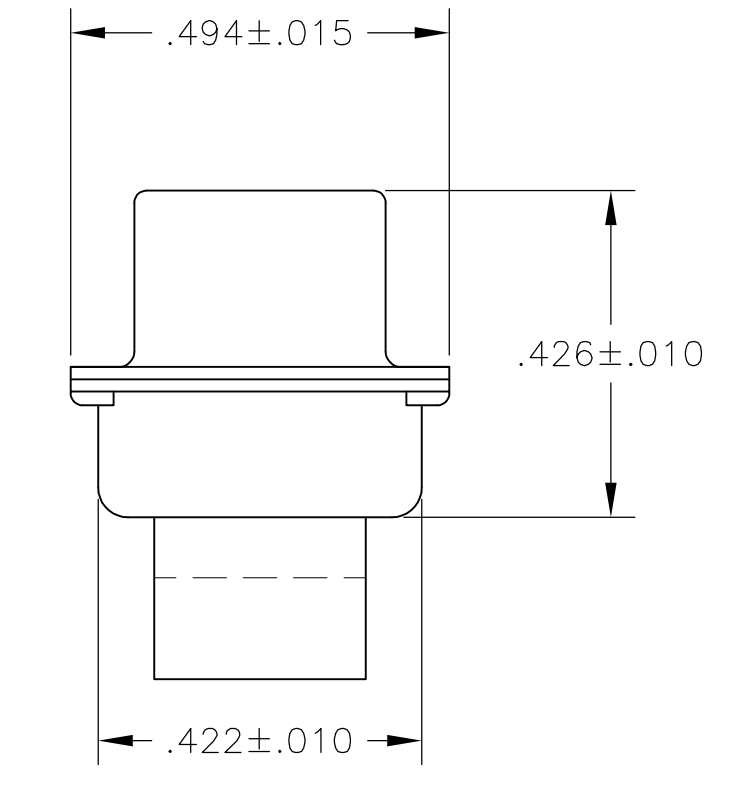
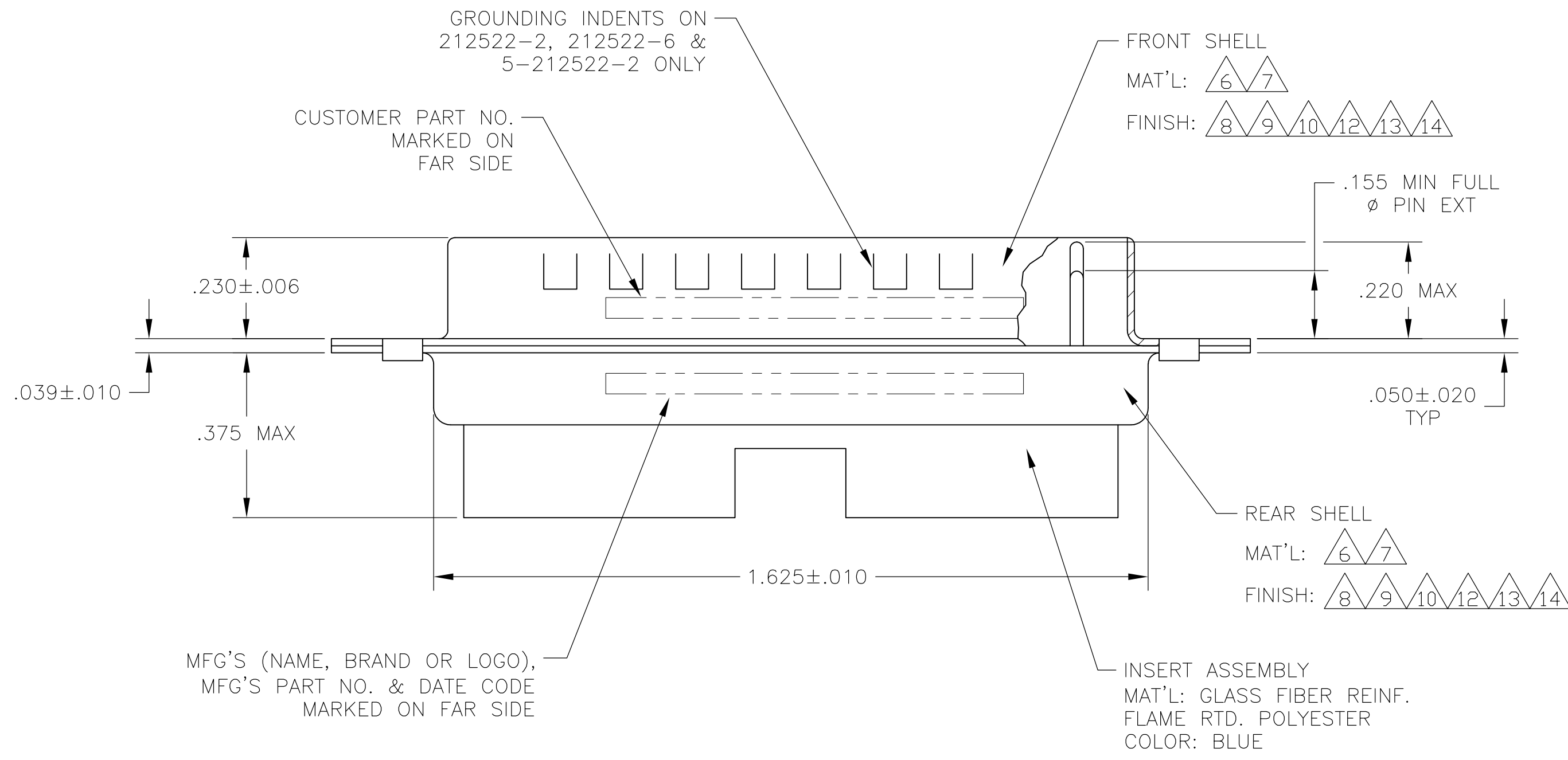
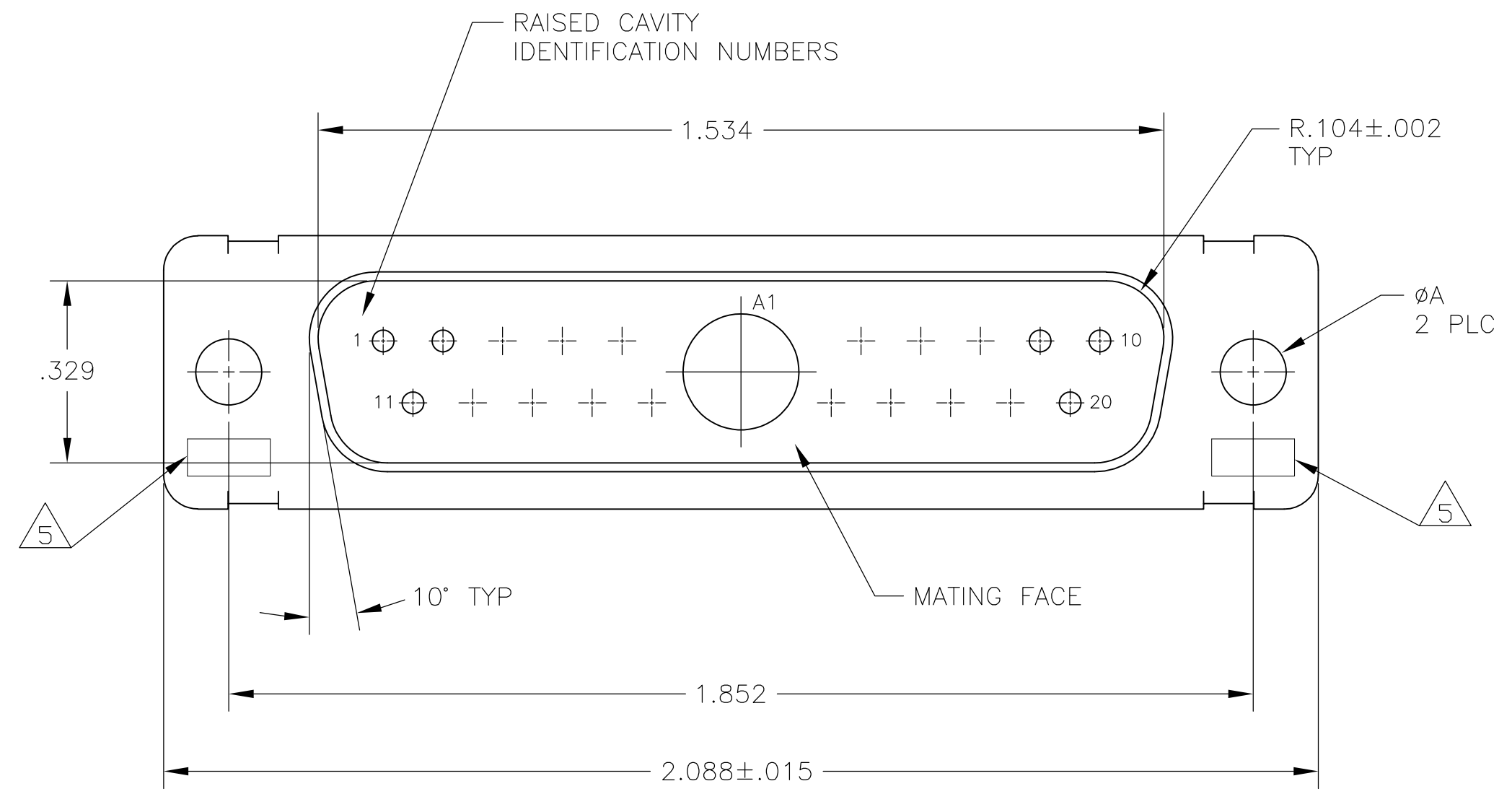


LOC	DIST	REV	DESCRIPTION	DATE	DRN	APVD
DF	DO	S	REV PER ECO 08-018752	08-21-08	PK	BW

- THIS PLUG WILL MATE WITH ANY 21C1, SIZE 3 RECEPTACLE IN AMPLIMITE SERIES.
  - MAXIMUM WIRE INSULATION TO BE USED WITH THIS PLUG IS  $\phi$ .068.
  - THIS CONNECTOR ACCEPTS (1) POWER 8, OR COAX PIN CONTACT IN POSITION A1, PURCHASED SEPARATELY.
  - THIS CONNECTOR ACCEPTS SIZE 20 PIN SIGNAL CONTACTS IN POSITIONS 1 THRU 20, PURCHASED SEPARATELY.
- $\triangle$ 5 UL/CSA DESIGNATION STAMPED IN THIS AREA, OPTIONAL.  
 $\triangle$ 6 STEEL PER ASTM-A-109.  
 $\triangle$ 7 BRASS PER MIL-C-50 AND ASTM-B-36 UNS NO. C26000.  
 $\triangle$ 8 CADMIUM PLATED PER QQ-P-416.  
 $\triangle$ 9 FINISH: GOLD PLATED PER MIL-G-45204 TYPE II, GRADE C, CLASS 1 OVER COPPER PER MIL-C-14550, CLASS IV.  
 $\triangle$ 10 FINISH: TIN PER ASTM-B-545, .000200 MIN THK OVER COPPER PER AMS2418, .000100-.000200 THK OR TIN-LEAD 93/7, .000200 MIN THK OVER COPPER PER AMS2418 .000100-.000200 THK.  
 $\triangle$ 11 212552-7 IS OBSOLETE.  
 $\triangle$ 12 FINISH: TIN PER ASTM-B-545, .000200 MIN THK OVER COPPER PER AMS2418, .000050 MIN THK.  
 $\triangle$ 13 FINISH: BRIGHT TIN PER ASTM-B-545, .000400-.000550 THK OVER COPPER PER AMS2418 .000050 MIN THK.  
 $\triangle$ 14 FINISH: ZINC PLATE PER ASTM-B-633 .000200-.000400 THK WITH SUPPLEMENTARY CHROMATE (Cr3+).



$\triangle$ 6/ $\triangle$ 12	.120	-	5-212522-2
$\triangle$ 6/ $\triangle$ 14	.120	-	5-212522-1
$\triangle$ 6/ $\triangle$ 13	.120	-	212522-7
$\triangle$ 6/ $\triangle$ 13	.120	-	212522-6
$\triangle$ 7/ $\triangle$ 9	.120	B010942-0039	212522-5
$\triangle$ 7/ $\triangle$ 9	.154	311P405-14P-B-15	212522-4
$\triangle$ 7/ $\triangle$ 9	.120	311P405-14P-B-12	212522-3
$\triangle$ 6/ $\triangle$ 10	.120	-	212522-2
$\triangle$ 6/ $\triangle$ 8	.120	-	212522-1
REMARKS	$\phi$ A	CUSTOMER P/N	PART NO.

THIS DRAWING IS A CONTROLLED DOCUMENT.

DIMENSIONS: INCHES  
 TOLERANCES UNLESS OTHERWISE SPECIFIED:  
 0 PLC ± -  
 1 PLC ± -  
 2 PLC ± -  
 3 PLC ± .005(0.13)  
 4 PLC ± -  
 ANGLES ± 0'30"

MATERIAL: -  
 FINISH: -

DWN: C.C. THOMAS 23-JAN-88  
 CHK: A. EMADI 26-JAN-88  
 APP'D: A. EMADI 26-JAN-88  
 NAME: PLUG ASSEMBLY AMPLIMITE 21C1 SIZE 3, SERIES 109, COAX MIX  
 SIZE: A1  
 CAGE CODE: 00779  
 DRAWING NO: 212522  
 CUSTOMER DRAWING  
 SCALE: 4:1  
 SHEET: 1 OF 1  
 REV: S

Tyco Electronics Corporation  
 Harrisburg, Pa 17105-3608